

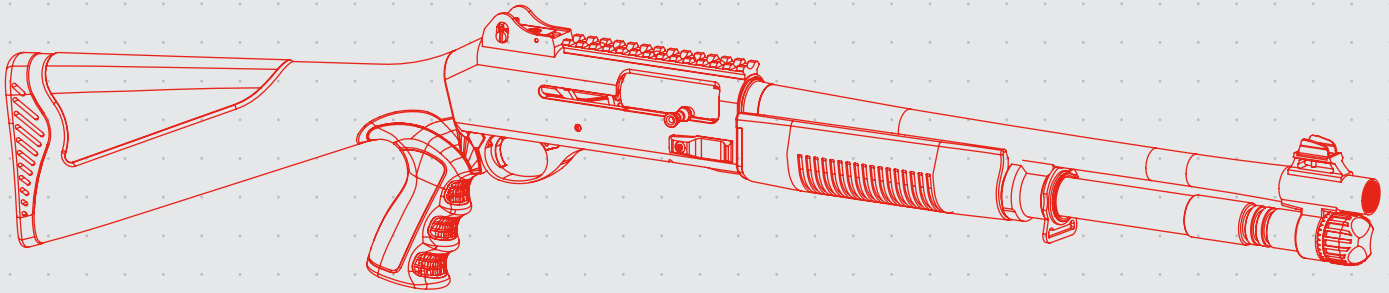
# CORVETTE

SEMI AUTOMATIC SHOTGUN OWNER MANUAL



**SIERRA**  
**DEFENSE**

Read the instructions and warnings in this manual before using this firearm!!!



### **SIERRA DEFENSE CORVETTE RECOMMENDATIONS**

- Your shotgun uses 2 3/4" and 3" shells only.
- We suggest to use 1350 FPS minimum velocity and quality brand ammunition.
  - Minimum 1 1/8 oz shells is suggested.
- 100 rounds of 1350+ FPS ammo for a break in period. Your shotgun will cycle lighter loads well after completing the proper break in period

## **INTRODUCTION TO Sierra Defense INDUSTRIES**

Sierra Defense Industries has been associated with the top class manufacturers in the firearms industry and is now exporting firearms to 45 different countries. All firearms are subjected to C.I.P. , SAAMI and TSE testing which ensures the highest quality firearms and an emphasis on safety. Traditional craftsmanship paired with modern technology has resulted in some of the finest firearms on the market today.

Sierra Defense Industries has built itself around its core philosophy: THE BEST OR NOTHING an emphasis on research and development has led to multiple patents as well as stunning and innovative design. We are driven by a continued commitment to design that leads the industry.

### **QUALITY CERTIFICATES:**

ISO 9001:2008 Certificate  
European Quality Assurance Certificate  
Turkish Standards Intitution Certificate

### **BASIC SAFETY RULES**

#### **1: NEVER POINT A FIREARM AT SOMETHING THAT IS NOT SAFE TO SHOOT.**

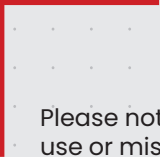
Never let the muzzle of a firearm point at any part of your body or at another person. This is especially important when loading or unloading the firearm. When you are shooting at a target, know what is behind it. Some bullets can travel over a mile. If you miss your target or if the bullet penetrates the target, it is your responsibility to ensure that the shot does not cause unintended injury or damage.

#### **2. ALWAYS TREAT A FIREARM AS IF IT WERE LOADED.**

Never assume that a firearm is unloaded. The only certain way to ensure that a firearm has the chamber empty is to open the chamber and visually and physically examine the inside to see if a round is present. Removing or unloading the magazine will not guarantee that a firearm is unloaded or can not fire. Shot-guns and rifles can be checked by removing all rounds and by then opening and inspecting the chamber for a visual inspection of the chamber for any remaining rounds.

#### **3. STORE YOUR FIREARM SO THAT CHILDREN CAN NOT GAIN ACCESS TO IT.**

It is your responsibility to ensure that children under the age of 18 or other unauthorized persons do not gain access to your firearm. To reduce the risk of accidents involving children, unload your firearm, lock it and store the ammunition in a separate locked location.



Please note that devices intended to prevent accidents – for example, cable locks, chamber plugs, etc, – may not prevent use or misuse of your . Firearm storage in a steel gun safe may be more appropriate to reduce the likelihood of intentional misuse of a firearm by an unauthorized child or person.

#### **4. NEVER SHOOT AT WATER OR AT A HARD SURFACE.**


Shooting at the surface of water or at a rock or other hard surface increases the chance of ricochets or fragmentation of the bullet or shot, which can result in the projectile striking an unintended or peripheral target.

#### **5. KNOW THE SAFETY FEATURES OF THE FIREARM YOU ARE USING, BUT REMEMBER: SAFETY DEVICES ARE NOT A SUBSTITUTE FOR SAFE HANDLING PROCEDURES.**

Never rely solely on a safety device to prevent an accident. It is imperative that you know and use the safety features of the particular firearm you are handling, but accidents can best be prevented by following the safe handling procedures described in these safety rules and elsewhere in the product manual. To further familiarize yourself with the proper use of this or other firearms, take a Firearms Safety Course taught by an expert in firearms use and safety procedures.

#### **6. PROPERLY MAINTAIN YOUR FIREARM.**

Store and carry your firearm so that dirt or lint does not accumulate in the working parts. Clean and oil your firearm, following the instructions provided in this manual, after each use to prevent corrosion, damage to the barrel or accumulation of impurities which can prevent use of the gun in an emergency. Before loading your firearm, always check the barrel internal part and the chamber to ensure that they are clean and free from obstructions. Firing with an obstruction in the barrel or chamber can rupture the barrel and injure you or others nearby. In the event you hear an unusual noise when shooting, stop firing immediately, engage the manual safety and unload the firearm. Make sure the chamber and barrel are free from any obstruction, like a bullet blocked inside the barrel due to defective or improper ammunition.



## 7. USE PROPER AMMUNITION.

Only use factory loaded, new ammunition manufactured to industry specifications: CIP (Europe and elsewhere), SAAMI® (U.S.A.). Be certain that each round you use is in the proper caliber or gauge and type for the particular firearm. The caliber or gauge of the firearm is clearly marked on the barrels of shotguns and on the slide or barrel of pistols. The use of reloaded or remanufactured ammunition can increase the likelihood of excessive cartridge pressures, case head ruptures or other defects in the ammunition that can cause damage to your firearm and injury to yourself or others nearby.

## 8. ALWAYS WEAR PROTECTIVE GLASSES AND EARPLUGS WHEN SHOOTING.

The chance that gas, gunpowder or metal fragments will blow back and injure a shooter who is firing a gun is rare, but the injury that can be sustained in such circumstances can be severe, including the possible loss of eye sight. A shooter must always wear impact resistant shooting glasses when firing any firearm. Earplugs or other high quality hearing protectors help reduce the chance of hearing damage from shooting.

## 9. NEVER CLIMB A TREE, FENCE OR OBSTRUCTION WITH A LOADED FIREARM.

Open and empty the chamber of your firearm and engage the manual safety catch before climbing or descending a tree or before climbing a fence or jumping over a ditch or other obstruction.

Never pull or push a loaded firearm toward yourself or another person. Always unload the firearm, visually and physically check to see that the magazine, loading mechanism and chamber are unloaded and that the bolt is open before handing the firearm to another person. Never take a firearm from another person unless it is unloaded, visually and physically checked to confirm it is unloaded, and the action is open.

## 10. AVOID ALCOHOLIC BEVERAGES OR JUDGEMENT/REFLEX IMPAIRING MEDICATION WHEN SHOOTING.

Do not drink alcohol and shoot. If you take medication that can impair motor reactions or judgment, do not handle a firearm while you are under the influence of the medication.

## 11. NEVER TRANSPORT A LOADED FIREARM.

Always unload your firearm before transporting.

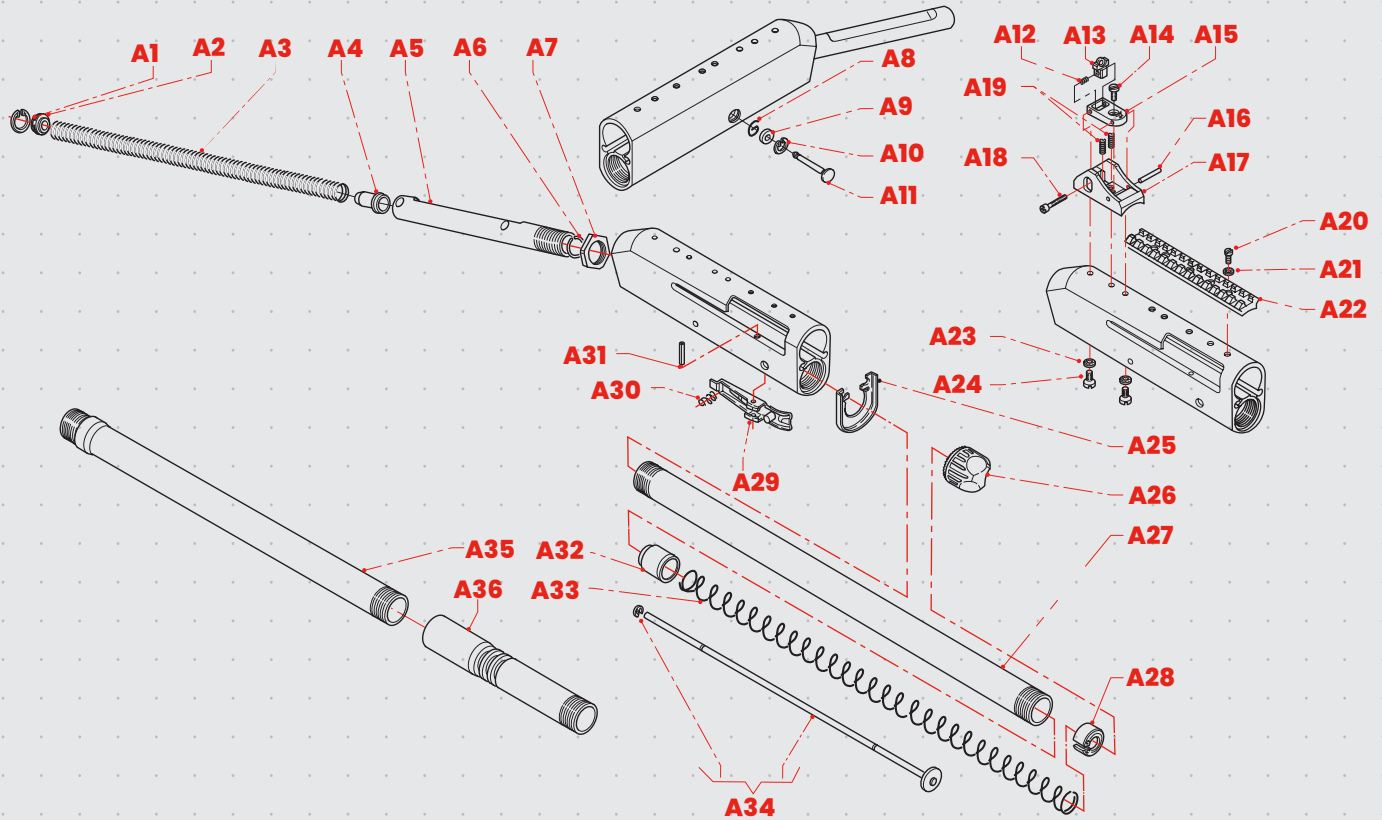
WE SPECIFICALLY DISCLAIM ANY RESPONSIBILITY FOR DAMAGE OR INJURY OCCURRING IN CONNECTION WITH, OR AS A RESULT OF THE USE OF FAULTY, OR "REMANUFACTURED," OR HAND-LOADED(RELOADED) AMMUNITION. ADDITIONALLY, WE DISCLAIM ANY RESPONSIBILITY FOR DAMAGE OR INJURY WHICH RESULTS FROM ANY MODIFICATIONS OR CHANGES THAT ARE NOT A PART OF THE FIREARM AS DELIVERED FROM THE FACTORY.

### **CONGRATULATIONS!!!**

Learn to clean your firearm thoroughly and make certain no oil, grease or other materials are blocking the barrel. Obstructions of any kind can cause damage to the firearm, and may result in serious personal injury to the shooter and/or others nearby. Practice proper firearm maintenance and safety. Make sure all exposed metal surfaces are coated with a thin film of oil, especially after exposure to damp weather. (See proper section of this manual for cleaning instructions. Do not plug barrel or store in a fabric-lined case which will absorb lubricants from the firearm. Before using after storage, follow complete instructions stated in this manual to refamiliarize with the firearm. A thorough inspection should be performed before going into the field. Have your firearm periodically checked by a qualified gunsmith. You are now the owner of the Sierra Defense CORVETTE SEMI AUTOMATIC 12 gauge shotgun. Your shotgun has an innovative design and is manufactured from high quality materials. With regularly performed maintenance and the use of proper ammunition it will provide you with many years of service. In order to achieve the best performance and reliability from your shotgun, please read and fully understand all of the instructions, safety guidelines, and warnings carefully in this manual. Your shotgun is reliable and safe unless it is handled in a careless or irresponsible manner.

**REMEMBER:** it is imperative that the firearm handler be fully educated and conscious of the importance of executing proper gun safety rules when operating any firearm. Before using or firing with any live ammunition you should know and fully understand your shotgun's parts, function, and operating mechanisms. So carefully read and fully understand all of the information about the parts and procedures of using the shotgun safely and effectively.


# DIAGRAM OF CORVETTE





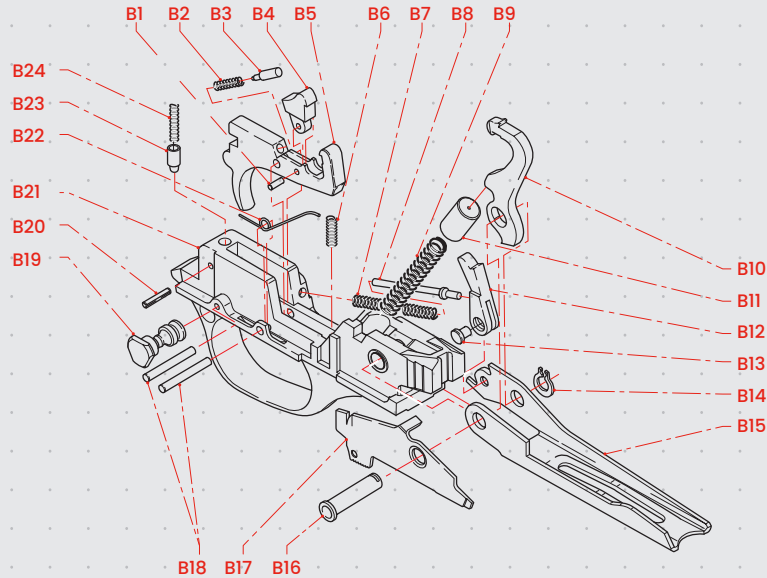
A1	STOCK RETAINING PIN
A2	STOCK RETAINING SCREW
A3	RECOIL SPRING
A4	RECOIL SPRING PLUNGER
A5	RECOIL SPRING TUBE
A6	FLEXIBLE RING
A7	TUBE RETAINER NUT
A8	T.G.P RETAINING SPRING
A9	T.G.P RETAINING SPACER
A10	T.G.P RETAINING RING
A11	TRIGGER GUARD PIN
A12	WINDAGE ADJUSTMENT SCREW
A13	REAR SIGHT APERTURE
A14	ELEVATION ADJUSTMENT SCREW
A15	ELEVATION PLATFORM
A16	REAR SIGHT PIN
A17	REAR SIGHT BASE
A18	WINDAGE ADJUSTMENT SCREW

A19	ELEVATION SPRINGS
A20	REAL MOUNT SCREW
A21	RAIL WASHER
A22	PICATINNY RAIL
A23	REAR SIGHT WASHER
A24	REAR SIGHT MOUNT SCREW
A25	HAND GUARD RETAINING BAND
A26	MAGAZINE CAP
A27	MAGAZINE TUBE
A28	MAGAZINE SPRING SEAL RING
A29	SHELL STOP
A30	SHELL STOP SPRING
A31	SHELL STOP PIN
A32	SHELL FOLLOWER
A33	MAGAZINE SPRING
A34	PLUG
A35	MAGAZINE TUBE
A36	MAGAZINE TUBE FIXER





## DIAGRAM OF CORVETTE



B1 DISCONNECTOR PIN

B2 DISCONNECTOR SPRING

B3 DISCONNECTOR PLUNGER

B4 DISCONNECTOR

B5 TRIGGER

B6 TRIGGER SPRING

B7 CARRIER SPRING

B8 CARRIER SPRING PLUNGER

B9 HAMMER SPRING

B10 HAMMER

B11 HAMMER SPRING CAP

B12 CARRIER DOG

B13 CARRIER DOG PIN

B14 TRIGGER GUARD PIN RING

B15 CARRIER

B16 TRIGGER PIN BUSHING

B17 CARRIER DROP LEVER

B18 TRIGGER PIN

B19 SAFETY BUTTON

B20 SAFETY PLUNGER RETAINER PIN

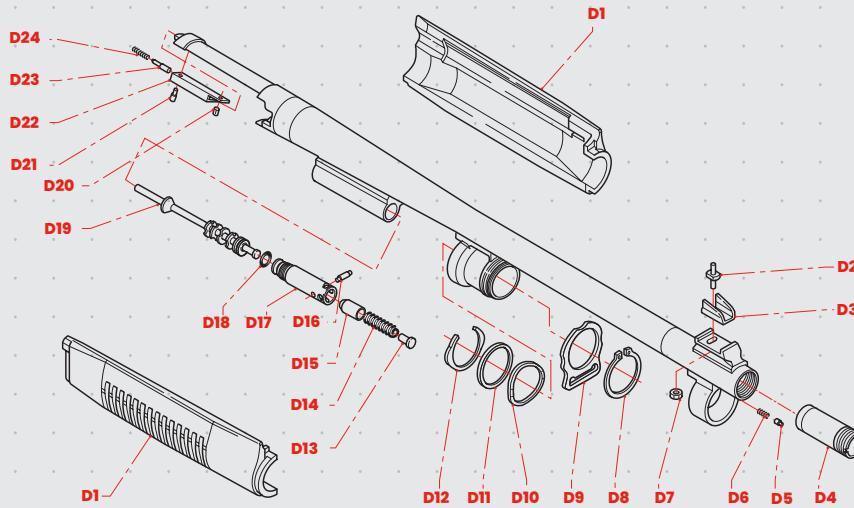
B21 TRIGGER GUARD

B22 SHELL RELEASE LEVER SPRING

B23 SAFETY PLUNGER

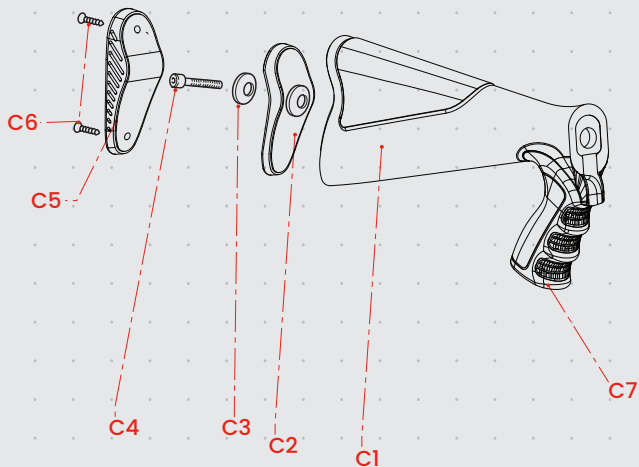
B24 SAFETY PLUNGER SPRING

## DIAGRAM OF CORVETTE

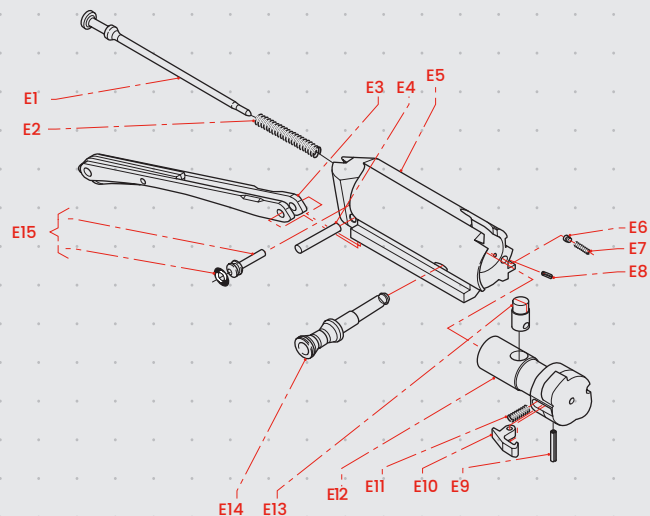


D1	HAND GUARD
D2	FRONT SIGHT POST
D3	FRONT SIGHT PROTECTION GUARD
D4	CHOKE TUBE
D5	CAP RETAINING PING
D6	CAP RETAINING SPRING
D7	FRONT SIGHT RETAINING NUT
D8	SLING PLATE RETAINER
D9	SLING ATTACHMENT PLATE
D10	SPRING WASHER
D11	WASHER
D12	RETAINING RING

D13	GAS PLUG SPACER
D14	GAS PLUG SPRING
D15	GAS PLUG CAP
D16	GAS PLUG PIN
D17	GAS PLUG
D18	GAS PLUG O RING
D19	GAS PISTON
D20	EJECTOR RETAINING RIVET
D21	EJECTOR SPRING RETAINER PIN
D22	EJECTOR HOUSING
D23	EJECTOR
D24	EJECTOR SPRING



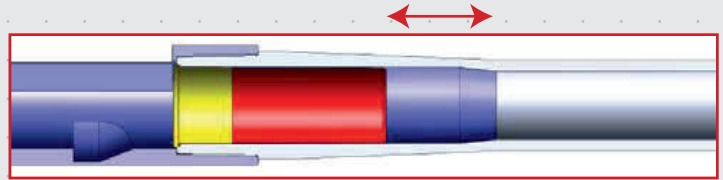
C1	STOCK
C2	STOCK RETAINING PLATE
C3	STOCK RETAINING PLATE WASHER
C4	STOCK RETAINING SCREW
C5	STOCK RETAINING PLATE
C6	RECOIL PAD SCREW
C7	RUBBERIZED PISTOL GRIP



E1	FIRING PIN
E2	FIRING PIN SPRING
E3	BOLT LINK
E4	BOLT LINK PIN
E5	BOLT
E6	CHARGING HANDLE DETENT
E7	CHARGING HANDLE DETENT SPRING
E8	CHARGING HANDLE SPRING RETAINING PIN
E9	EXTRACTOR PIN
E10	EXTRACTOR
E11	EXTRACTOR SPRING
E12	BOLT HEAD
E13	LOCKING HEAD PIN
E14	CHARGING HANDLE
E15	FIRING PIN RETAINING

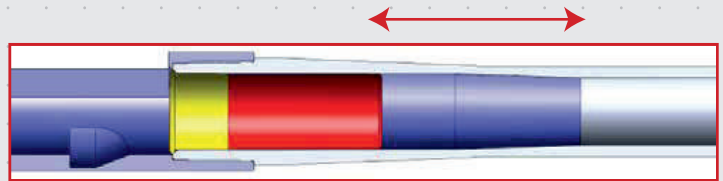
### **TRADITIONAL FORCING CONE**

Traditional shotguns use a short forcing cone. Short forcing cones cause inconsistent cycling, jams and other issues. Short forcing cones lead to excess gas pressure in the barrel and can lead to damage.

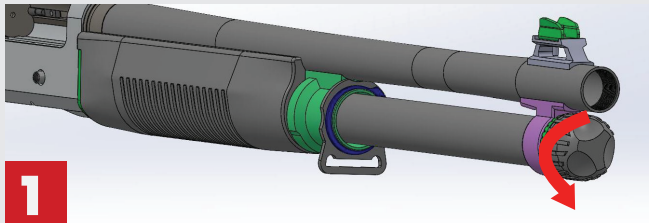


### **CORVETTE FORCING CONE**

The Corvette forcing cone is an elongated design and provides 6% less recoil. It also reduces muzzle rise by evenly dispersing the gas inside the barrel.

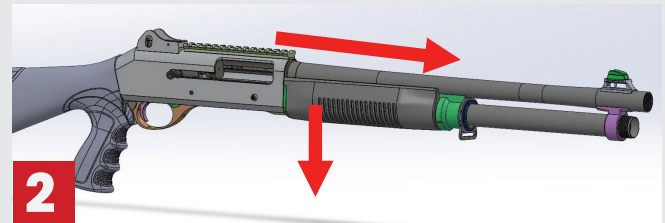


# DISASSEMBLY



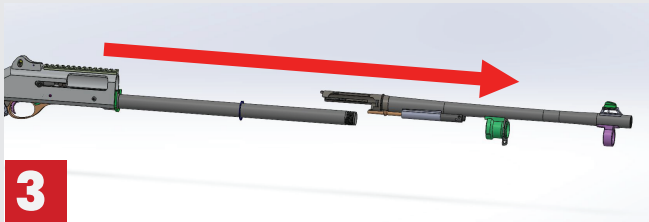
**1**

1- Unscrew the magazine cap. (fig. 1)



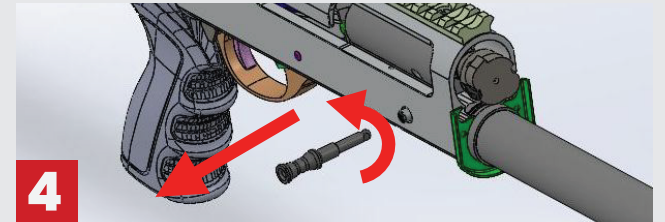
**2**

2- Pull the barrel slightly out of the receiver then separate and remove the handguard. (fig. 2)



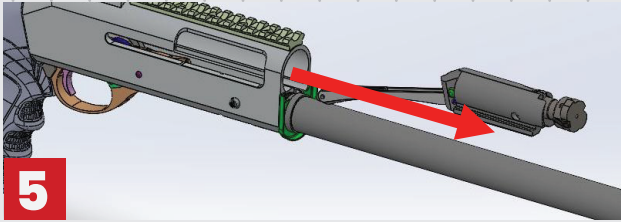
**3**

3- Remove the barrel from the receiver. (fig. 3)



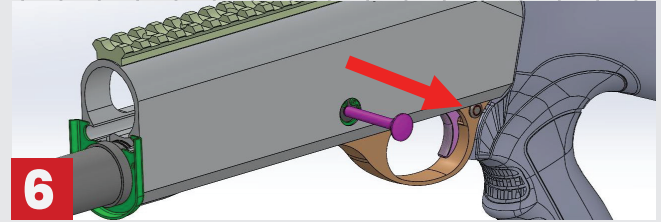
**4**

4- Remove the charging handle by twisting and pulling out the charging handle. (fig. 4)



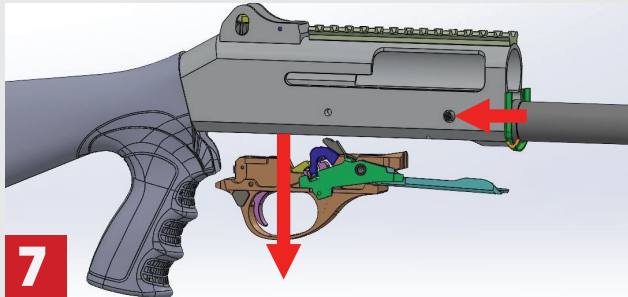
5

5- Remove the bolt from the receiver. (fig. 5)



6

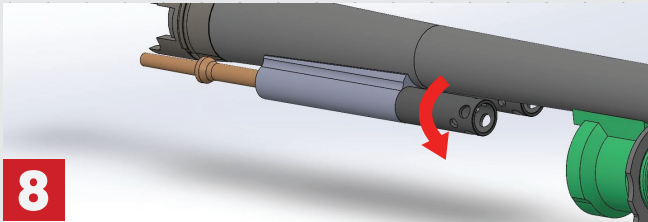
6- To remove the fire control group, start by punching out the fire control group retention pin. (fig. 6)



7

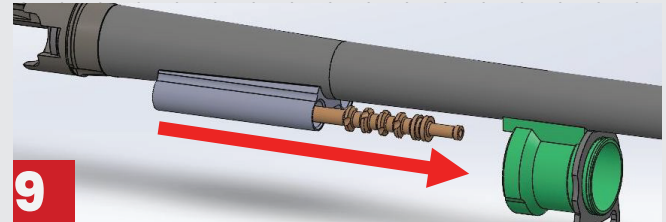
7- Push and hold down the bolt release button, then pull the fire control group out of the bottom of the receiver. (fig. 7)

Your shotgun is now ready for easy cleaning and maintenance . Your gun normally cleans its gas system automatically and we do not suggest to disassemble gas system of your gun!!! If you need to clean your gas system you can follow the steps below.



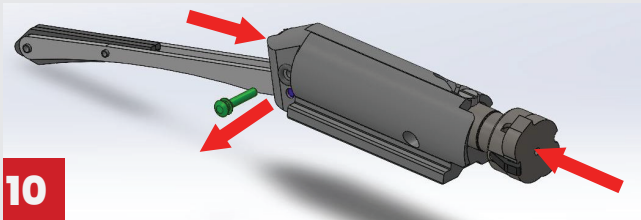
**8**

8- To remove the gas cylinder plugs, take a punch and turn them counterclockwise until you can finish removing them by hand. (fig. 8)



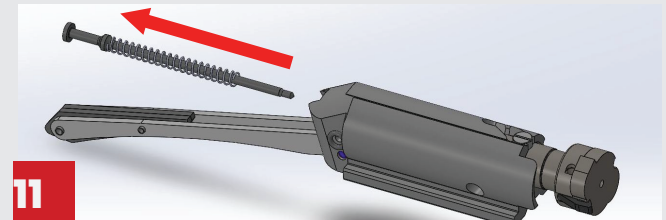
**9**

9- Using your hand, hand push the gas piston out the front side of the housing. (fig. 9)



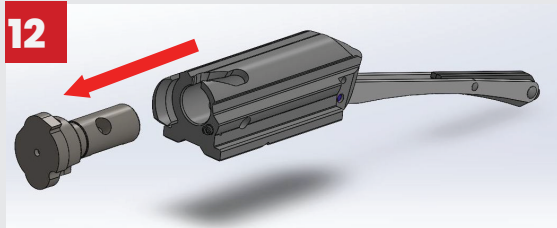
**10**

10- To disassemble the bolt, locate the head of the firing pin at the rear of the bolt and cover it with your finger. Then with another finger push in the locking head of the bolt. While holding both simultaneously, remove the firing pin retaining pin. (fig. 10)

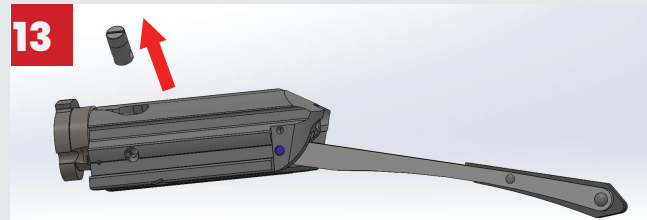


**11**

11- Slowly ease your finger back off of the firing pin. The firing pin is under spring tension so gently back off of it until the tension is gone. Then remove the firing pin and firing pin spring out of the back of the bolt. (fig. 11)



12- Turn the bolt over and dump out the locking head retaining pin. Have the pin in the rear of the channel when dumping out so it can be removed. (fig. 12)

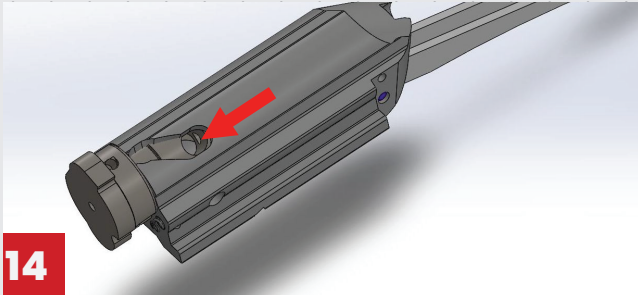


13- Remove the locking head by pulling it out of the bolt. (fig. 13)

Your shotgun is now completely disassembled for cleaning and maintenance.

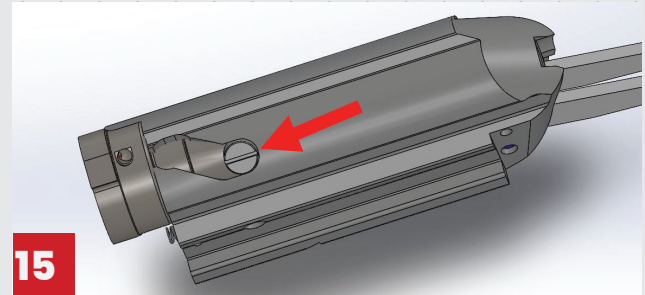


# ASSEMBLY



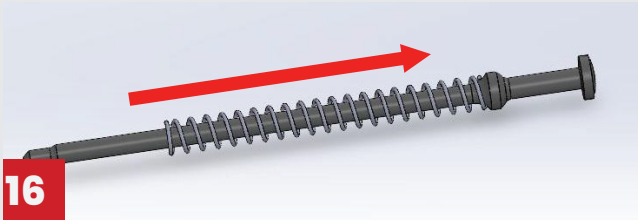
**14**

14- To assemble the bolt, insert the locking head into the bolt making sure to line up the hole in the locking head with the end of the channel in the bolt. (fig. 14)



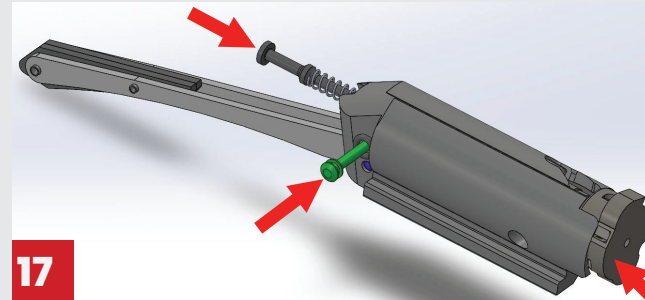
**15**

15- Insert the locking head retaining pin so that the line in the head of the pin is parallel with the bolt to allow a clear path for the firing pin. (fig. 15)



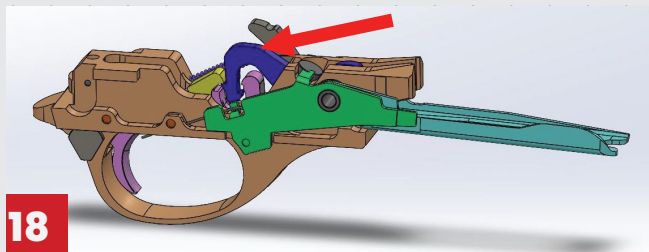
**16**

16- Take the firing pin spring and place it over the firing pin. (fig. 16)



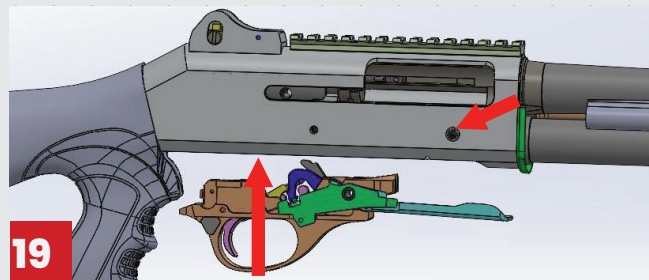
**17**

17- While holding the locking head into the bolt insert the firing pin and hold it flush with the back of the bolt. While holding the firing pin and locking head simultaneously, insert the firing pin retaining pin. (fig. 17)



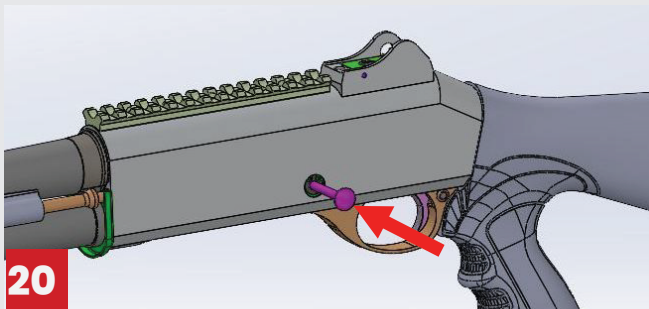
**18**

18- Take the fire control group and make sure the hammer is cocked with the safety on. (fig. 18)



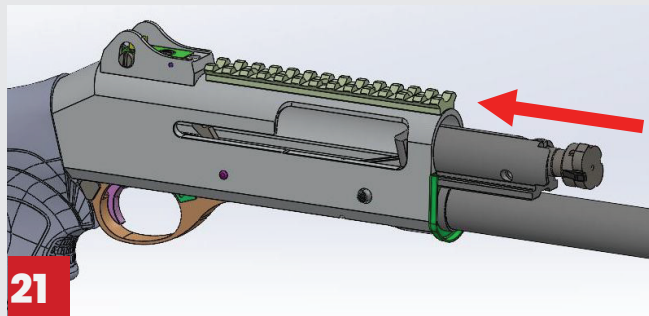
**19**

19- While holding the bolt release button, insert the fire control group into the shotgun and ensure the hole in the fire control group is lined up with the hole in the receiver. (fig. 19)



**20**

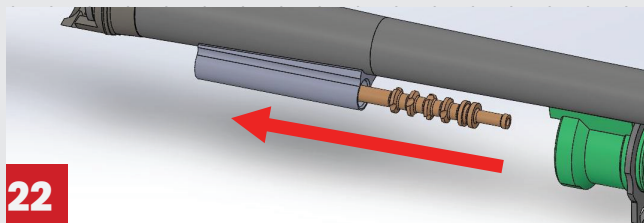
20- Insert the fire control group retaining pin.(fig. 20)



**21**

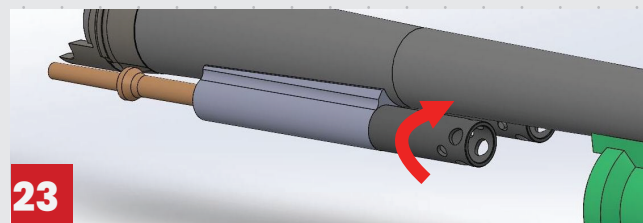
21- Insert the bolt by sliding it along the rails of the receiver. (fig. 21)

If you disassembled gas system of your gun you can reassemble the system by following the Figure 18 and Figure 19



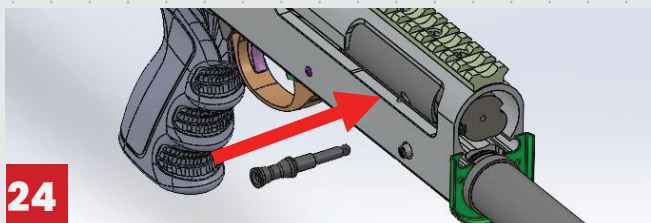
**22**

22-Insert the gas piston into the housing. (fig. 22)



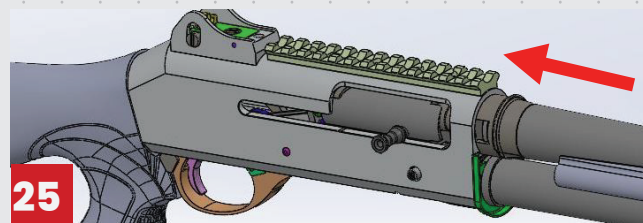
**23**

23- Take the gas cylinder plugs and screw them in clockwise by hand. Then take a punch and tighten to a snug fit. (fig. 23)



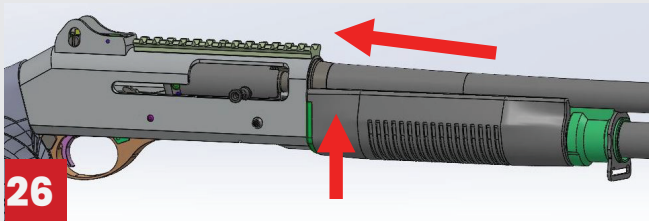
**24**

24-Insert the charging handle into the bolt. (fig. 24)

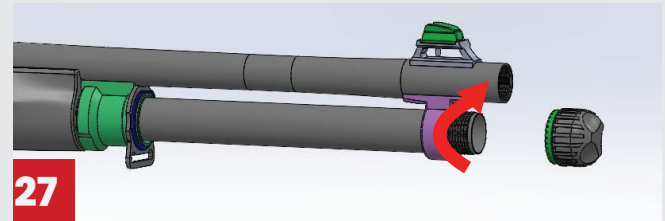


**25**

25-Insert the barrel into the receiver and put the magazine tube through the barrel hanger. Push the barrel into the receiver but stop short of inserting it all the way and leave a small gap between it and the receiver. (fig. 25)



26- Take the two handguard pieces and insert them into the retaining bands. Then push the barrel and hand guard flush with the receiver. (fig. 26)

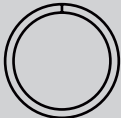
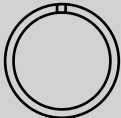
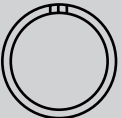
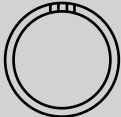
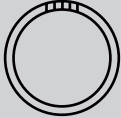


27- By hand screw down and tighten the magazine cap until it is snug. (fig. 27)

Your shotgun is now completely assembled.

## CHOKE TYPES AND BENEFICIAL USAGE

WARNING: When shooting slugs or buckshot use only the #5 choke.

CHOKE TYPE	SYMBOL	IDEAL GAME	PELLET SIZE	USEFUL SHOOTING DISTANCE
* 1 FULL		Goose, Duck, Wood Grouse. For long range hunting with lead shot and tight groups	1-2-3	55-65 Yards (50-60 Metres)
** 2 IMPROVED MODIFIED		Duck, Pheasant, Wood Grouse, Rabbit	4-5-6	45-50 Yards (41-44 Metres)
*** 3 MODIFIED		Partridge, Pheasant, Quail, Pigeons, Woodcock For long range hunting with lead shot and tight groups.	5-6-7-8	38-43 Yards (35-41 Metres)
**** 4 IMPROVED CYLINDER		Quail, Dove and target shooting For shooter distance more open shooting	7-8-9-10 -11-12	32-38 Yards (30-35 Metres)
***** 5 CYLINDER		For sporting clay and skeet shooting. Short distances more open shooting.	7-8-9-10 -11-12	22-32 Yards (20-30 Metres)

WARNING: MPX includes number 1-3-5 mobile choke in box.

## MAINTENANCE AND CLEANING

**LUBRICATION WARNING:** Firing a shotgun with oil, grease, or other debris partially obstructing the bore may result in damage to the firearm or injury to the shooter and those nearby. Before firing make sure the bore and chamber of the barrel is unobstructed and dry. Never spray or apply lubricant on shotshells. Firing another shotshell behind an obstruction may damage the shotgun and cause death or injury. Only use lubricants properly and sparingly. You are responsible for the proper care and maintenance of your shotgun.

- 1.** Disassemble your shotgun.
- 2.** Using a proper cleaning rod, run a solvent-wetted patch through the bore several times. This will then be followed by running dry patches through the bore to remove any debris or residue.
- 3.** If the bore is leaded to the extent that the above patch cleaning procedure did not remove the lead, then scrub the bore full length with a solvent-wetted brass bristle brush. When the leading is loose then repeat step #2.
- 4.** The surfaces the bolt carrier, ejector and inside surfaces of the receiver should be coated very lightly with non-penetrating lubricating oil.
- 5.** Reassemble the shotgun and wipe the exterior metal surfaces sparingly with an oiled cloth. Swab the bore with an oily patch before storing the firearm.
- 6.** Place the shotgun in a safe, locked storage space where unauthorized persons cannot access the firearm. Never store the shotgun in a leather case as leather attracts moisture even though it may appear dry.
- 7.** Never fire your gun without choke tubes snugly tightened in barrels. Do not over tighten choke tubes. Wipe all exposed metal surfaces with an oiled cloth before storing. Do not squirt or pour oil into the inside mechanism because it may cause deformation.

## SERVICE AGREEMENT AND LIMITED WARRANTY

**IMPORTANT WARNING:**

In case of a malfunction with your firearm, after taking safety precautions, you can contact our authorized dealer for detailed assistance regarding the malfunction.

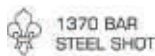
**IMPORTANT WARNING:**

If the malfunction in your firearm is not resolved, you can call our factory technical service at +90 544 672 97 95 for remote assistance or e-mail us at [info@sierradefense.com](mailto:info@sierradefense.com).

**IMPORTANT WARNING:**

If, after contacting our factory technical service, a malfunction occurs that requires the product to be sent for service, please fill out the form according to the instructions given by our technical service representative and send it to the specified address using our company's Aras Kargo contract code. Include a copy of the official warranty certificate filled out and stamped by our authorized dealer, along with copies of the invoice and license. Shipping costs for products sent to the factory technical service under warranty will be covered by our company if sent with our contracted shipping company. (Shipping costs for out-of-warranty products will be covered by the user. For products still under warranty, shipping costs for malfunctions caused by the customer are the responsibility of the user.)

**S A A M I**



**ISO**  
9001:2008  
REGISTERED



**ERA**  
European Quality Assurance



When shooting or hunting always acquire the permission of the landowner. Respect the land. Do not litter, use gates when possible, leave closed gates closed. Drive vehicles only where advance permission has been granted and always express gratitude for use of another persons land. Offer your labor or game as repayment for the privilege of use. Remember you are helping develop a reputation for all sportsmen/sportswomen.



**SIERRA**  
**DEFENSE**  
\*USA\*

[sierradefenseusa.com](http://sierradefenseusa.com)



Printed on ecological paper using solar energy